




# Focus in Italia (2')

**Regia:** Antonio D'Onofrio  
**Produzione:** SD Cinematografica  
**Durata:** 20x2'  
**Versioni:**   
**Formato:** SD

Una raccolta di "pillole" delle migliori immagini sugli animali presenti in Italia e comuni a tutti i paesi del Mediterraneo. Una serie realizzata con grande accuratezza scientifica ed un testo avvincente. Il tutto sotto la supervisione di National Geographic Channel.



## Episodi:

- Airone guardabuoi
- Aquila reale
- Astice
- Cavalluccio marino
- Cernia Bruna
- Cervone
- Falco pellegrino

- Fenicottero
- Ghiocco di fiume
- Grifone
- Istrice
- La gallina prataiola
- Lontra
- Lupo

- Ninfa Corbezzolo
- Nudibranchi
- Orso
- Paguri
- Pellicano
- Volpe



sd cinematografica

worldwide distribution

lungotevere delle navi 19 - 00196 roma - italy  
ph: +39.06.3215114 - fax: +39.0664520220 - mail: info@sdcinematografica.it

# Episodi



**Airone guardiabuo**  
Antonio D'Onofrio



**Aquila reale**  
Antonio D'Onofrio



**Astice**  
Antonio D'Onofrio



**Cavalluccio marino**  
Antonio D'Onofrio



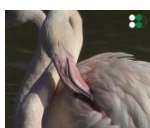
**Cernia Bruna**  
Antonio D'Onofrio



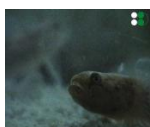
**Cervone**  
Antonio D'Onofrio



**Falco pellegrino**  
Antonio D'Onofrio



**Fenicottero**  
Antonio D'Onofrio

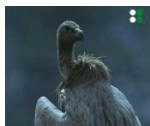


**Ghiozzo di fiume**  
Antonio D'Onofrio

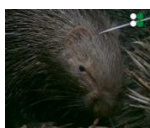


sd cinematografica

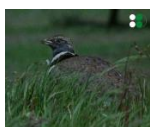
worldwide distribution



**Grifone**  
Antonio D'Onofrio



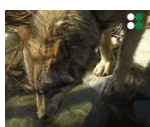
**Istrice**  
Antonio D'Onofrio



**La gallina prataiola**  
Antonio D'Onofrio



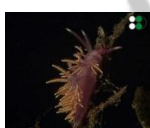
**Lontra**  
Antonio D'Onofrio



**Lupo**  
Antonio D'Onofrio



**Ninfa Corbezzolo**  
Antonio D'Onofrio



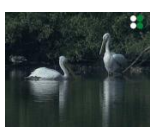
**Nudibranchi**  
Antonio D'Onofrio



**Orso**  
Antonio D'Onofrio



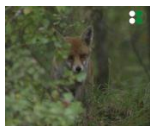
**Paguri**  
Antonio D'Onofrio



**Pellicano**  
Antonio D'Onofrio



sd cinematografica  
worldwide distribution



**Volpe**  
**Antonio D'Onofrio**



sd cinematografica  
worldwide distribution

---

lungotevere delle navi 19 - 00196 roma - italy  
ph: +39.06.3215114 - fax: +39.0664520220 - mail: [info@sdcinematografica.it](mailto:info@sdcinematografica.it)