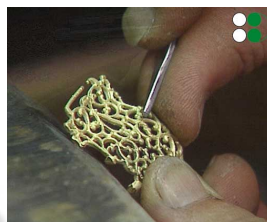




# Majella

**Directed by:** Jost Geppert  
**Produced by:** SD Cinematografica  
**Duration:** 3x15'  
**Versions:**   
**Format:** SD

A mountain of incomparable beauty stands in the heart of Italy, Majella.  
Covered in streams, meadows and woods, Majella is the realm of the Apennine wolf.  
This series introduces us to a world where time has stood still.



**EPISODES:**

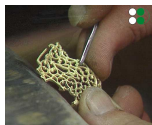
- The park and the man
- The park for life
- The birth and life of the mother mountain



sd cinematografica  
worldwide distribution

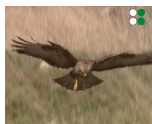
lungotevere delle navi 19 - 00196 roma - italy  
ph: +39.063215514 - fax: +39.0664520220 - mail: [info@sdcinematografica.it](mailto:info@sdcinematografica.it)

# Episodes



## **The park and the man** **Jost Geppert**

Among the Italian national parks, that of Majella, planned since 1991, and then definitively instituted in 1995, was strongly desired by the local population which in various forms showed their desire to conserve the territory and their inheritance of natural resources, traditions, and culture, which has always constituted their world.



## **The park for life** **Jost Geppert**

The wolf is the animal symbol of the National Park of Majella.

In these very mountains it has managed to survive, while in the rest of western Europe it has been exterminated.

Today, its population has grown, and the wolf continues to live its natural life in the wild spaces of the slopes, and hunts its prey which has also become once more numerous, thanks to the projects of reintroduction.



## **The birth and life of the mother mountain** **Jost Geppert**

We are in the heart of the Mediterranean region, two steps away from the Adriatic sea, but not a year passes without abundant snows, which in the winter months cover with a white blanket, the more than seventy summits of the Majella heights, protected by the most important national parks in Europe.



sd cinematografica

worldwide distribution

lungotevere delle navi 19 - 00196 roma - italy  
ph: +39.063215514 - fax: +39.0664520220 - mail: [info@sdcinematografica.it](mailto:info@sdcinematografica.it)